

## KOZO KEIKAKU ENGINEERING/株式会社構造計画研究所

[Position] Engineering Consultant

### ■Company Profile

[No of Employees ] 611 (※As of September 8, 2021)

[Sales ] 13,631 Mil JPY (FYE June 2021)

[Founded ] May 6, 1959

[Capital ] 1,010 Mil JPY

[Company website] <https://www.kke.co.jp/en/corporate/> / [www.kke.co.jp/recruit/newgraduates/en/](https://www.kke.co.jp/recruit/newgraduates/en/)

[Business Field]

#### **1. Construction/Disaster Preparedness Field**

Buildings and infrastructure that can withstand disasters are critical to achieving safe and secure communities that will bring us towards a better future. By leveraging base isolation / vibration damping design, modeling, simulation, and other such engineering technologies, we provide the right services for improving the value of municipal performances.

#### **2. Manufacturing Field**

Along with better efficiency and speed, the manufacturing industry is also looking for better quality. Meeting these needs means meeting the needs of everyone in the supply chain, including business partners and subcontractors. We leverage our information management and simulation technologies to comprehensively support the design, manufacturing, distribution, sales, quality, and management operations that surround products.

#### **3. Decision-Making Support Field**

The world increasingly needs to make better decisions and build consensus through an engineering-based approach, one that involves analyzing and making sense of the complexity and uncertainty of human decision-making and behavior. By leveraging state-of-the-art modeling and simulation technologies, we provide the engineering expertise to create services for companies and society.

#### **4. Information/Telecommunication Field**

Society is undergoing great change as evidenced by the rise of smart factories, smart cities, and the forward march of telecommunications technologies. Taking advantage of the system development and communications control technologies that we have developed over our long history allows us to provide comprehensive support for our customers' business.

### ■Job Profile

[Employment status ] Permanent Position

[Hire Date]Dec 2022 or April 2023

[Working location ] Japan: Tokyo or Kumamoto

[Occupational categories ]

There are four fields opened for the engineering consulting position. Please note that below are general descriptions for each position.

### **1. Engineering Consultant in Construction/Disaster Preparedness Field**

- Acquiring a wide range of knowledge for building construction and disaster preparedness
- Figuring the client's needs through meetings
- Solving the client's problem by providing structural design service and/or analytical service
- Handling and supporting the project to ensure high achievements

### **2. Engineering Consultant in Manufacturing Field**

- Acquire a wide range of knowledge on Manufacturing
- Communicate with the partner companies
- Figure the client's needs through meetings
- Solve the client's problem by offering products and consultation
- Handle and support projects to ensure high achievements

### **3. Engineering Consultant in Decision-Making Support Field**

- Acquire a wide range of knowledge of society, business, and community
- Figure the client's needs through meetings
- Solve the client's problem by utilizing simulation and other analytic technology
- Control or support project to ensure high achievement

### **4. Engineering Consultant in Information/Telecommunication Field**

- Acquire a wide range of knowledge in IT
- Figure the client's needs through meetings
- Solve the client's problem by providing IT system
- Handle and support projects to ensure high achievements

### **■ Working conditions & benefits**

[Salary] We take a merit-based pay system. Your base pay consists of rank and score that is determined by the rank system, and your age. Examples are as below.

Master's degree (Monthly pay, Without dependents)

◆ TOTAL\* 239,750JPY

◇ Base pay: Sub-total 201,250JPY

-Rank: J1 145,000JPY

-Score: Assessment 3 9,000JPY

-Age (at the start of fiscal year): 23yrs old 47,250JPY

◇ Allowance: Subtotal 38,500JPY

Doctor Degree (Monthly pay, Without dependents)

◆ TOTAL 245,000JPY

◇ Base pay: Sub-total 206,500JPY

-Rank: J1 145,000JPY

-Score: Assessment 3 9,000JPY

-Age (at the start of fiscal year): 26yrs old 52,500JPY

◇ Allowance: Subtotal 38,500JPY

\*TOTAL contains all allowance except overtime work allowance (e.g., 40hours of overtime will add another approx. 60,000 JPY.) The mentioned salary is before deduction. For your first year approximately 45,000 JPY, and after the second year approximately 55,000 JPY will be deducted. Factors of deduction are health cost insurance, care insurance (35 years of age or more), employee pension, employment insurance, income tax and inhabitant tax (after the 2nd year), etc.

FYI: The average cost living in Tokyo

The cost of a single working person living in Tokyo is between 140,000JPY (≒ 1350 US\$) and 194,000JPY (≒ 1850 US\$) a month, including rent, food, discretionary spending, transportation, taxes and insurance. [賞与/Bonus] Semi-Annual Bonus depends on company and individual performance. Commonly 100,000JPY in 1st year. Thereafter, an equivalent to 2 months' salary is basically assured.

[Salary raise] Once a year based on merit-based pay system.

[Allowance] Overtime work allowance, Commuting allowance

[Holiday] Saturdays, Sundays, Japanese National Holidays (15days), New year Holidays, Paid Holidays - 10 days\* plus 5 days Summer Vacation

Special Leave (paid): Marriage, Demise of relative, Parental leave, Menstrual leave, Lay judge, Continuous service, etc.

\*You can use maximum 3days (22.5hrs/year) as time-paid vacations.

[Benefits]

- Housing subsidies 600,000JPY/max. per yr.
- Incentive for employee's savings scheme 100,000JPY/max. per yr.
- Desktop or laptop PC lending system
- Mobile phone or Tablet lending system
- Health insurance
- Health Check-up
- Retirement allowance
- Coupon of various services of the companies in alliance
- Meal voucher
- Recreation Facility
- Sports and Recreation Facilities and Support
- Incentive for Employee Stock Ownership Plan

## ■ Recruitment requirements

We are looking for talents who are determined to become a professional engineering consultant to join our firm. As an engineering consultant, you will be meeting with clients to discuss their problems and needs from its root, offer engineering and technical solutions and follow through with the implementation of suggested solutions until the problem is solved.

The position requires having both perspective as an engineer and a consultant: an engineer who has a deep understanding in technologies, explores then chooses an adequate method/technology to solve an issue and

a consultant who sees things from the clients' eyes and works side by side with them on problem solving.

[English ability] Proficiency level required

**[Japanese ability] Not required when applying.** \*As an engineering consultant who works with its client side by side, language is a key factor for communication and performance.

Please note that within 18 months after accepting our job offer, you are required to study Japanese (at your country or/and in Tokyo) and pass Japanese Language Proficiency Test N2 Level\*.

We ask you to take and pass this test to improve your Japanese language skill since language plays a large part working and developing your career as a professional.

\*N2 level = "The ability to understand Japanese used in everyday situations, and in a variety of circumstances to a certain degree." The average studying hours to pass N2 is approx. 600hrs.

## ■ Selection flow

Company briefing session(3rd March) / Non selection process

⇒ Application for screening / Selection process

⇒ Presentation by the Engineers / Non selection process

⇒ Interactive dialogue / Selection process

⇒ Meet the Engineer / Non selection process

⇒ Group exercise, CV screening by the Engineer / Selection process

⇒ Meeting with HR personnel / Non selection process

⇒ **Final interview in TOKYO** / Selection process, in person only

## [Important Notes about the selection this year]

Candidates in Japan and outside of Japan are eligible. However, to understand the company's atmosphere, we think visiting our office and meeting us F2F would be best. **For this reason, our final interview will take place at our Tokyo head office. Upon applying to our recruitment process for those living outside Japan, please understand that your final interview date might change due to the situation and the traveling regulations for COVID-19 by each country.**

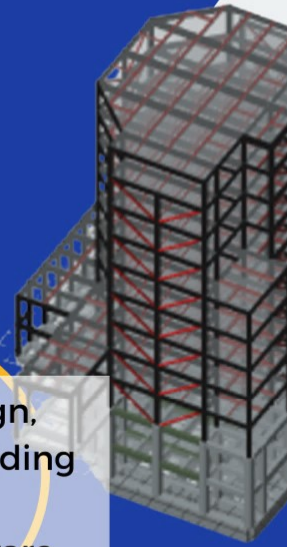
\*Upon visiting our office: COVID-19 Countermeasures

Your physical and mental safety is our priority; therefore, we will take the following measures.

- a. Arrange seating with ample distance in the venue.
- b. Prepare masks and disinfectants.
- c. Ventilate the venue as much as possible.

# WE ARE LOOKING FOR NEW TALENTS!

KKE has started as a university venture company for structural design, which pioneered the use of digital computers in the industry. Extending their experience and knowledge with IT and engineering, today, it simulates natural phenomena, develops telecommunications software, provides CAD/CAE software for the manufacturing industry, and supports decision-making through consulting.



## POSITIONS

**Engineering Consultant in the following four business fields**

1. Construction/Disaster Preparedness Field
2. Manufacturing Field
3. Decision-Making Support Field
4. Information/ Telecommunication Field

## Requirements

- Japanese: Not Required
- All engineering backgrounds
- Master, Doctor Degree preferred

## ONLINE COMPANY BRIEFING

3 March (Thur) JST 19:00~20:00

**Scan the QR code  
for registration and the detail!**

For inquiries, please contact  
[chu@asiatojapan.com](mailto:chu@asiatojapan.com)

